

CDH13 Antibody (Center)
Purified Rabbit Polyclonal Antibody (Pab)
Catalog # AP21902c**Specification**

CDH13 Antibody (Center) - Product Information

Application	WB,E
Primary Accession	P55290
Other Accession	Q3B7N0 , Q9WTR5 , Q5R5W6
Reactivity	Human, Mouse
Predicted	Bovine
Host	Rabbit
Clonality	polyclonal
Isotype	Rabbit IgG
Calculated MW	78287

CDH13 Antibody (Center) - Additional Information**Gene ID** 1012**Other Names**

Cadherin-13, Heart cadherin, H-cadherin, P105, Truncated cadherin, T-cad, T-cadherin, CDH13, CDHH

Target/Specificity

This CDH13 antibody is generated from a rabbit immunized with a KLH conjugated synthetic peptide between 222-256 amino acids from the Central region of human CDH13.

Dilution

WB~~1:2000

E~~Use at an assay dependent concentration.

Format

Purified polyclonal antibody supplied in PBS with 0.09% (W/V) sodium azide. This antibody is purified through a protein A column, followed by peptide affinity purification.

Storage

Maintain refrigerated at 2-8°C for up to 2 weeks. For long term storage store at -20°C in small aliquots to prevent freeze-thaw cycles.

Precautions

CDH13 Antibody (Center) is for research use only and not for use in diagnostic or therapeutic procedures.

CDH13 Antibody (Center) - Protein Information**Name** CDH13

Synonyms CDHH

Function Cadherins are calcium-dependent cell adhesion proteins. They preferentially interact with themselves in a homophilic manner in connecting cells; cadherins may thus contribute to the sorting of heterogeneous cell types. May act as a negative regulator of neural cell growth.

Cellular Location

Cell membrane {ECO:0000250|UniProtKB:Q9WTR5}; Lipid-anchor, GPI-anchor. Cytoplasm {ECO:0000250|UniProtKB:Q9WTR5}

Tissue Location

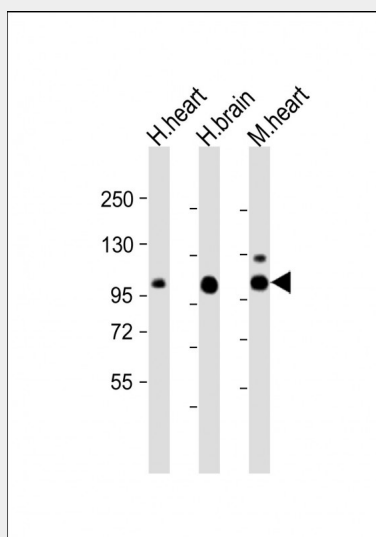
Highly expressed in heart. In the CNS, expressed in cerebral cortex, medulla, hippocampus, amygdala, thalamus and substantia nigra. No expression detected in cerebellum or spinal cord

CDH13 Antibody (Center) - Protocols

Provided below are standard protocols that you may find useful for product applications.

- [Western Blot](#)
- [Blocking Peptides](#)
- [Dot Blot](#)
- [Immunohistochemistry](#)
- [Immunofluorescence](#)
- [Immunoprecipitation](#)
- [Flow Cytometry](#)
- [Cell Culture](#)

CDH13 Antibody (Center) - Images



All lanes : Anti-CDH13 Antibody (Center) at 1:2000 dilution Lane 1: human heart lysate Lane 2: human brain lysate Lane 3: mouse heart lysate Lysates/proteins at 20 µg per lane. Secondary Goat Anti-Rabbit IgG, (H+L), Peroxidase conjugated at 1/10000 dilution. Predicted band size : 78 kDa Blocking/Dilution buffer: 5% NFDN/TBST.

CDH13 Antibody (Center) - Background

Cadherins are calcium-dependent cell adhesion proteins. They preferentially interact with

themselves in a homophilic manner in connecting cells; cadherins may thus contribute to the sorting of heterogeneous cell types. May act as a negative regulator of neural cell growth.

CDH13 Antibody (Center) - References

Tanihara H.,et al.Cell Adhes. Commun. 2:15-26(1994).

Lee S.W.,et al.Nat. Med. 2:776-782(1996).

Sato M.,et al.Hum. Genet. 103:96-101(1998).

Liu Q.-R.,et al.Submitted (OCT-2007) to the EMBL/GenBank/DDBJ databases.

Ota T.,et al.Nat. Genet. 36:40-45(2004).